

SALES AND MARKETING OFFICE

HAKAN hydraulic pneumatic

rtc
COUPLERS TECHNOLOGY
SINCE 1970





















ROSS
VA 26 Volt/Hz
220 / 50 AC
220-240 / 60 AC

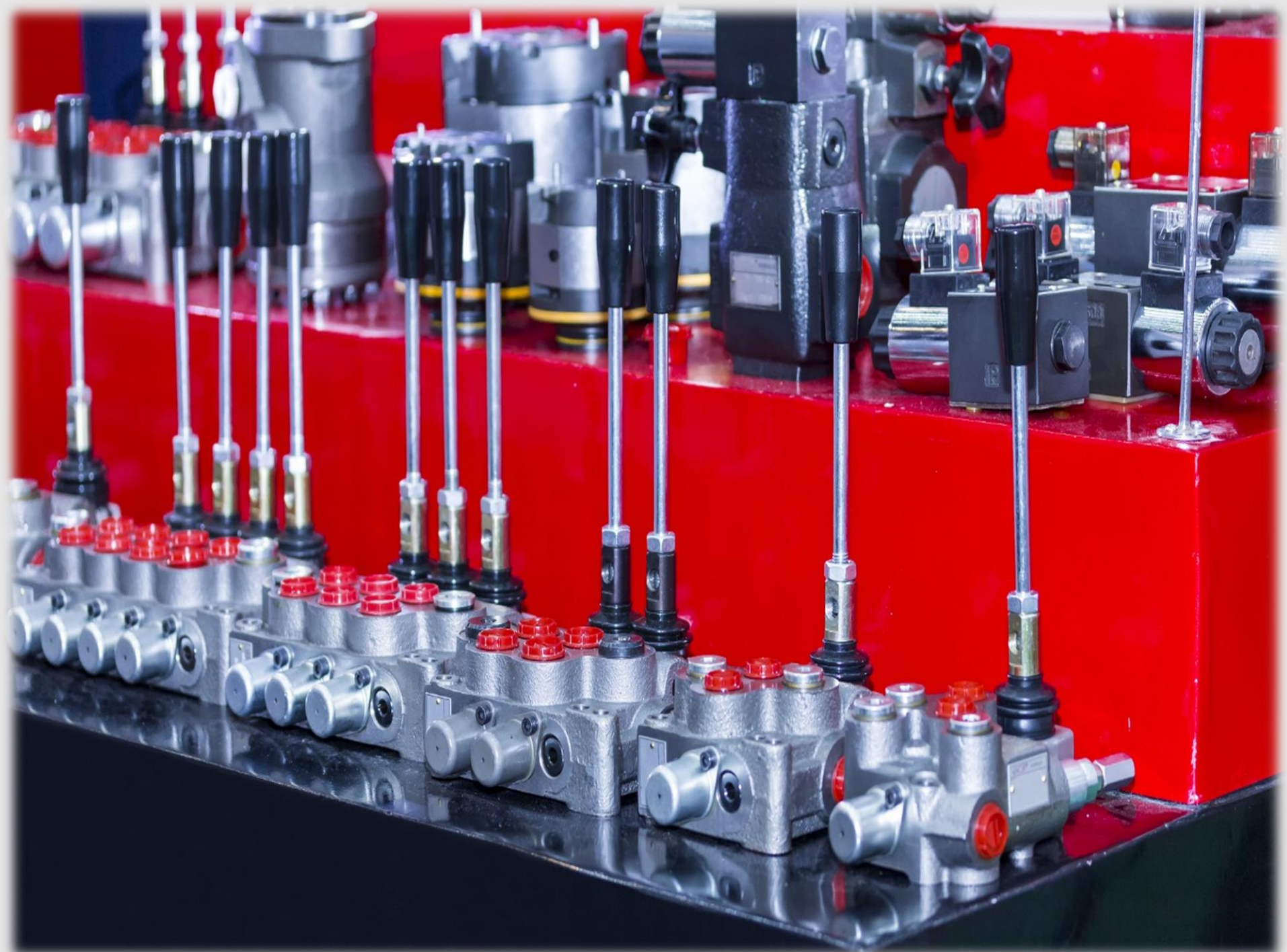
2

2

2

ROSS
D2776B6011 1-10 bar









OXY ARC NOZZLE

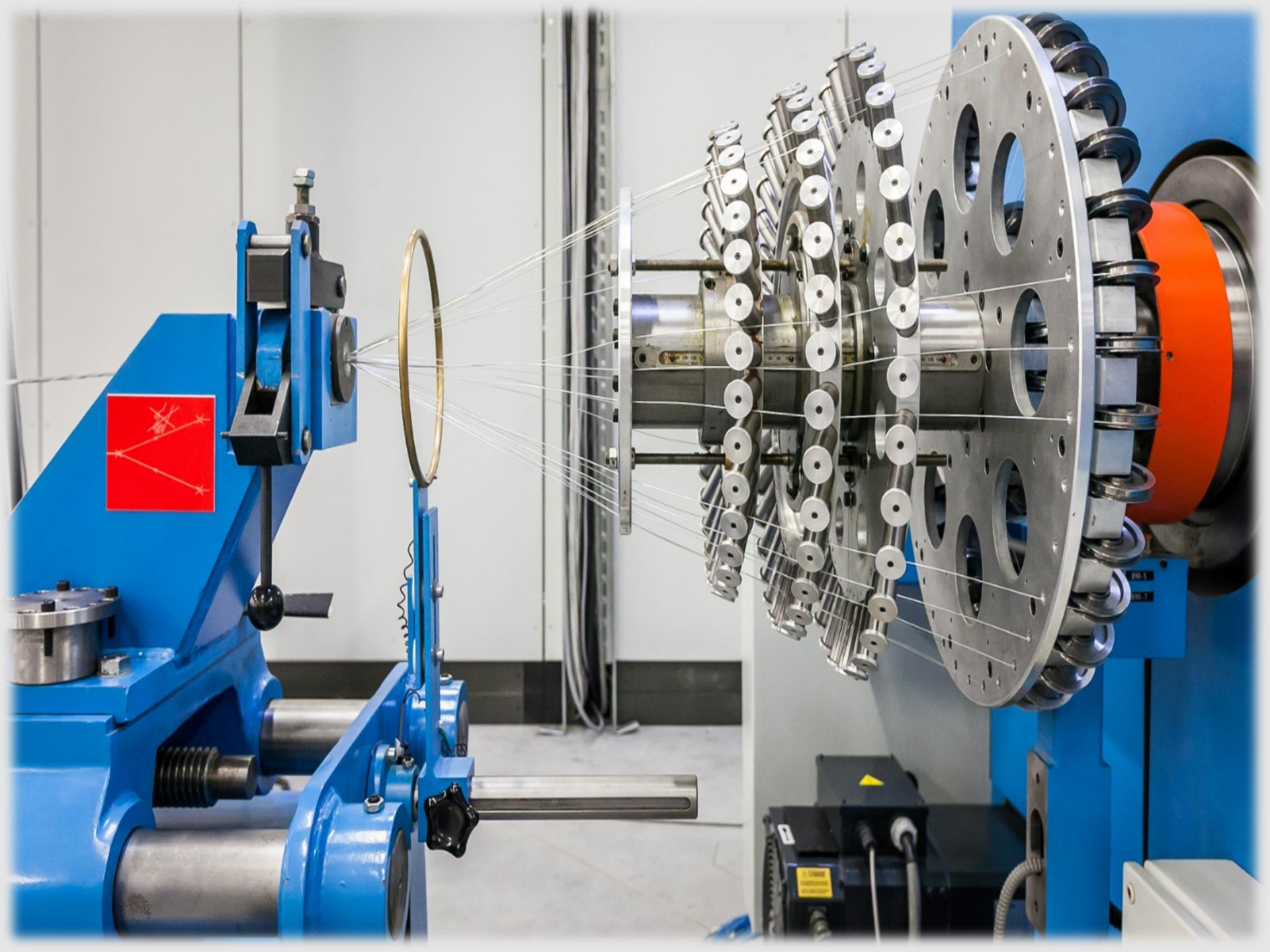






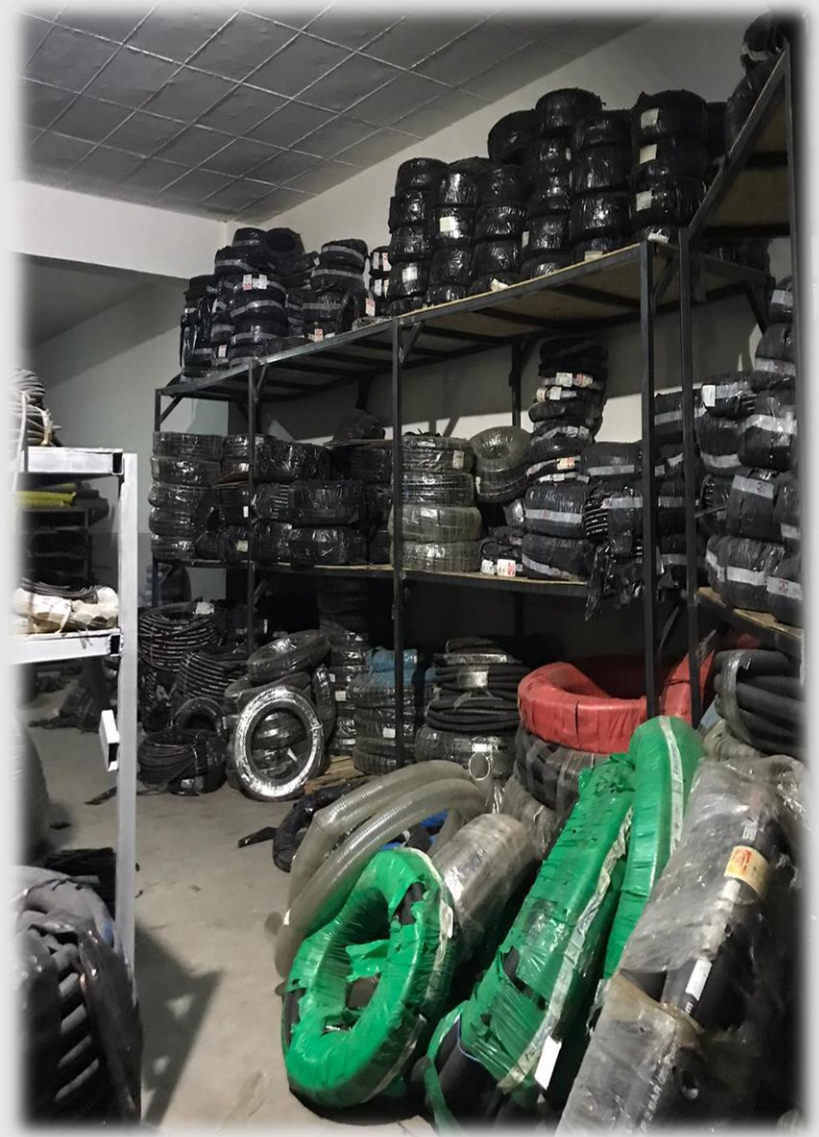


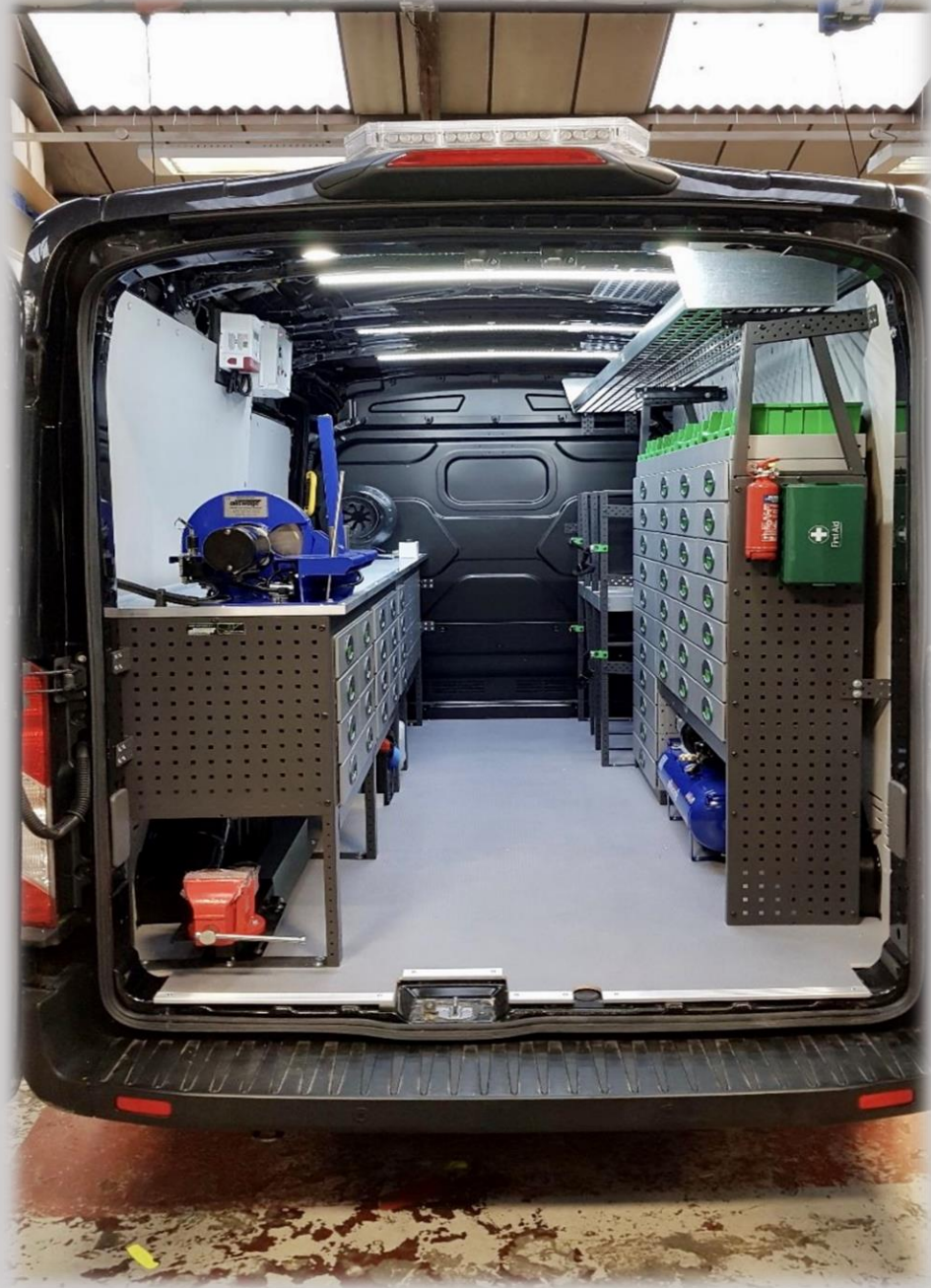
FLEX HOSES

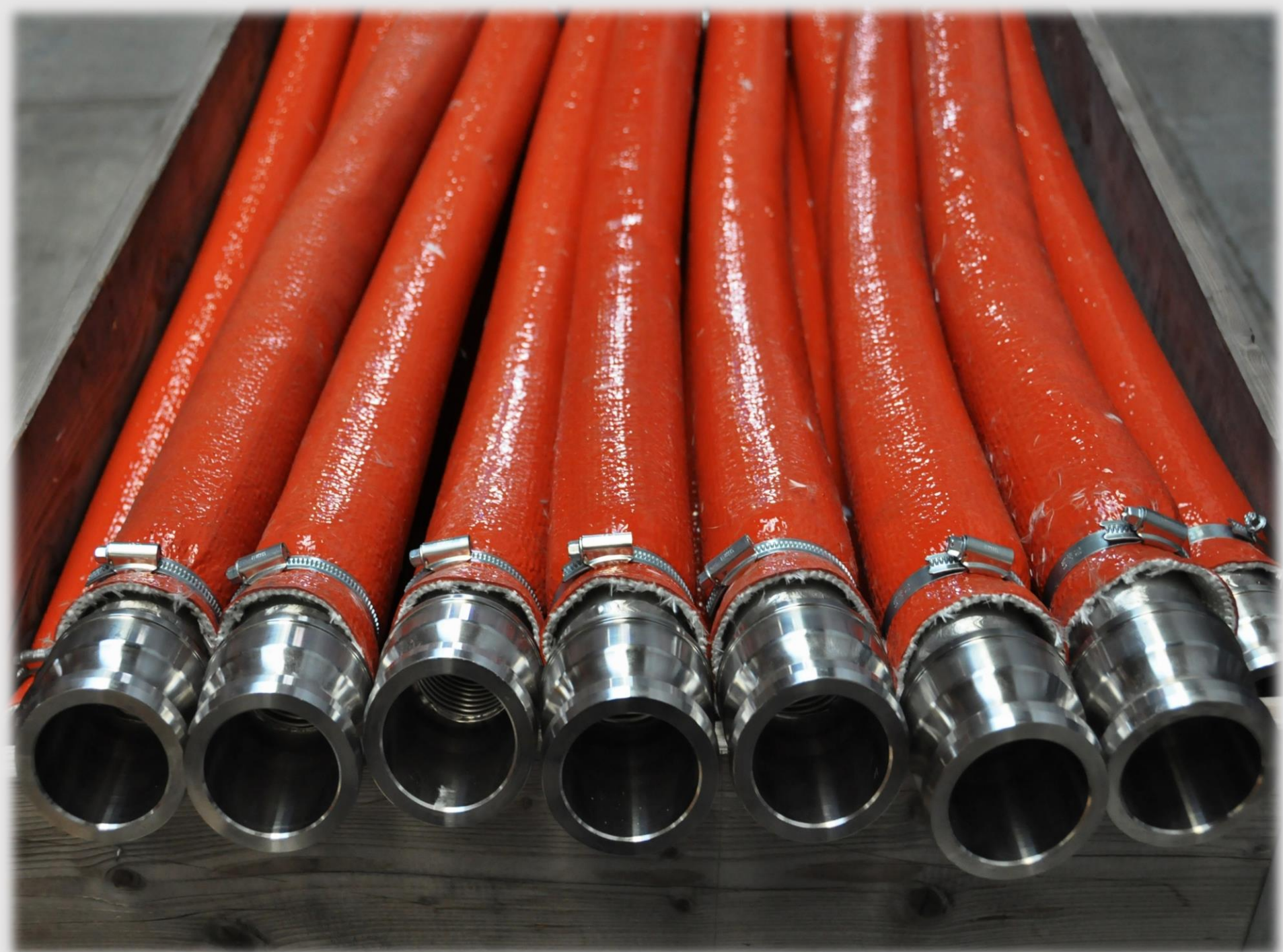


















SUS304
1/2" NPT
50A 10' P2

50A 10' P2

DOOSAN DNM 5700

TOOL LOADING



CAUTION

- Operator must follow the "TOOL LOADING" activation key when inserting a tool to the machine.
- If heavy load setting load when removing it from spindle by manual operation. If setting load is dropped, operator can be injured with machine and be damaged.
- After loading/unloading of ATC unit, check tool data in tool management screen on tool holder and read. If correct, the manual start and read. If correct, the manual start and read.

WARNING



DANGER



DANGER



DANGER

REFERENCE POINT RETURN DIRECTION

X	+
Y	+
Z	+

SPRINKLE WARM UP OPERATION

- It takes about maximum 5 minutes to spray the coolant. Please wait after power stop.
- Open the door during the coolant operation.

DAILY CHECK

- Make sure there are no abnormalities in the machine.
- Make sure all people who are working in the machine are wearing safety glasses.
- Make sure the machine is in the normal state.
- Make sure the machine is in the normal state.
- Make sure the machine is in the normal state.

SAFETY PRECAUTION

Observe the following safety precautions when operating the machine.

- Do not touch the moving parts of the machine.
- Do not touch the moving parts of the machine.
- Do not touch the moving parts of the machine.
- Do not touch the moving parts of the machine.
- Do not touch the moving parts of the machine.



A red-painted workbench with a black top surface. On the bench are several metal parts, including a hexagonal nut and a cylindrical piece. There are also various tools: a yellow and black tape measure, a red-handled wrench, a green box, and a pair of yellow work gloves. In the background, there are more metal parts and a red toolbox.



A man in a dark blue work uniform with a white reflective stripe is operating the machine. The uniform has a logo on the back that reads "HAKAN" and "MICRO-LIC & PNEUMATIC Since 1972". He is standing at the control panel, which features a large screen and various buttons. The machine is a large industrial lathe with a complex structure and a drill bit visible in the center.

DOOSAN

PUMA GT2600L

HAKAN
HİDROLİK PNEMATİK
Sind 1972





DOOSAN
PUMA 67200K

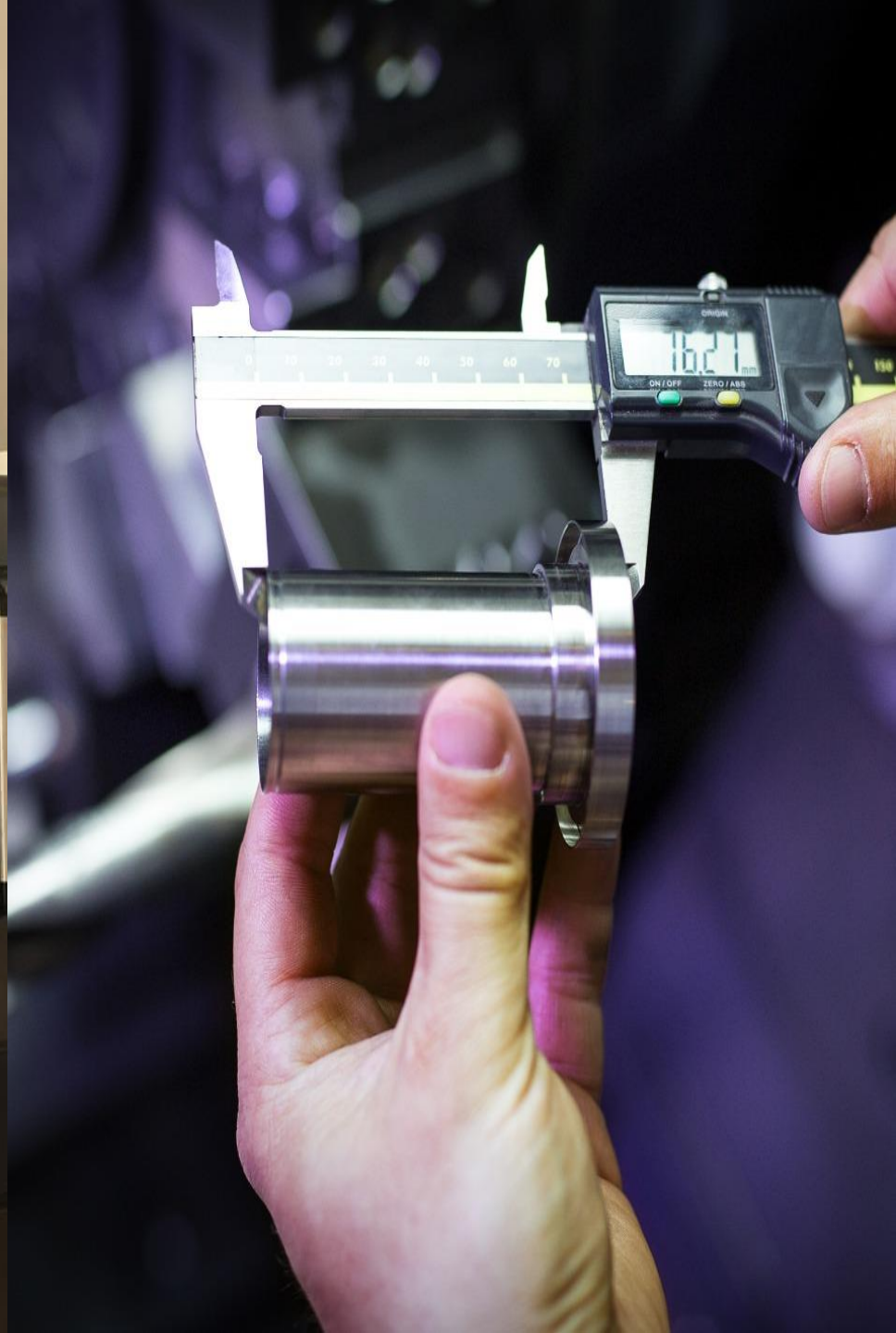
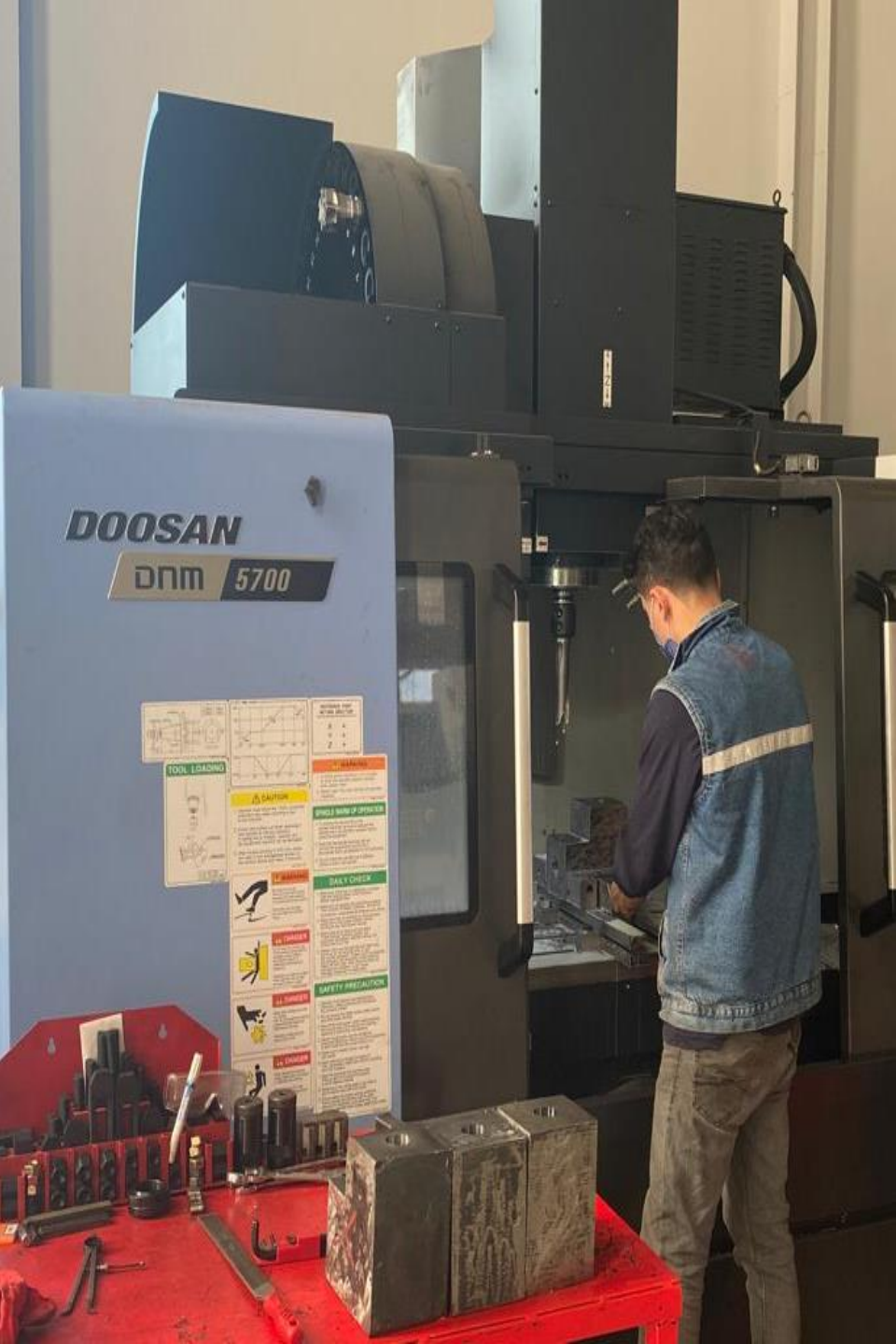
⚠ DANGER
⚠ WARNING
⚠ CAUTION

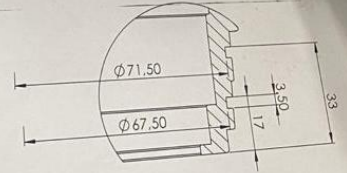
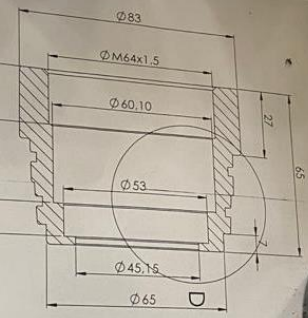
⚙
⚙
⚙



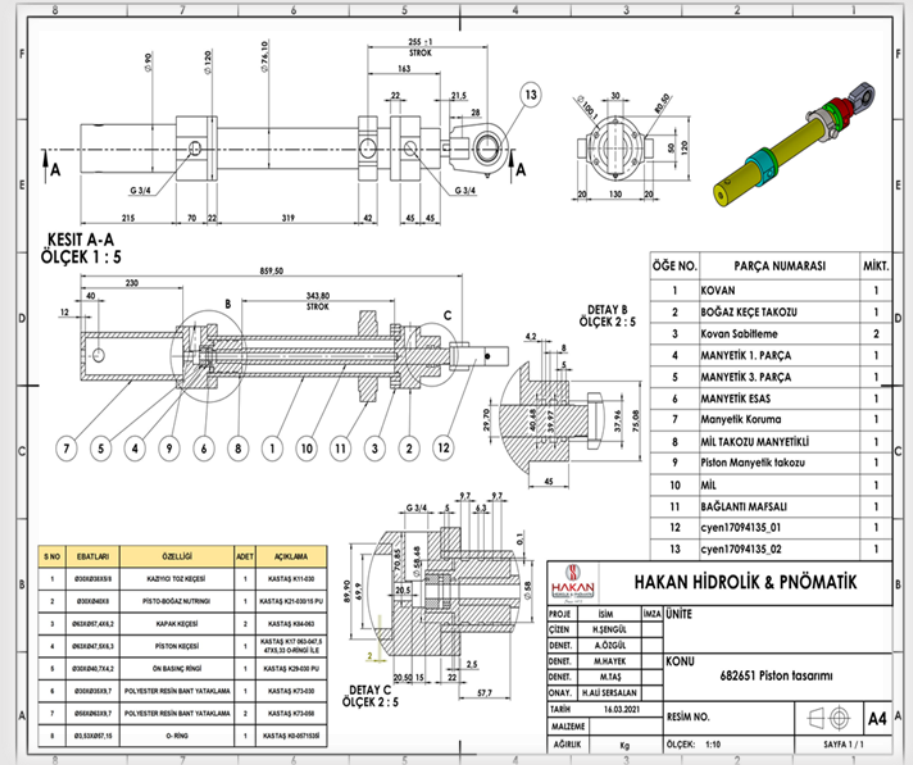
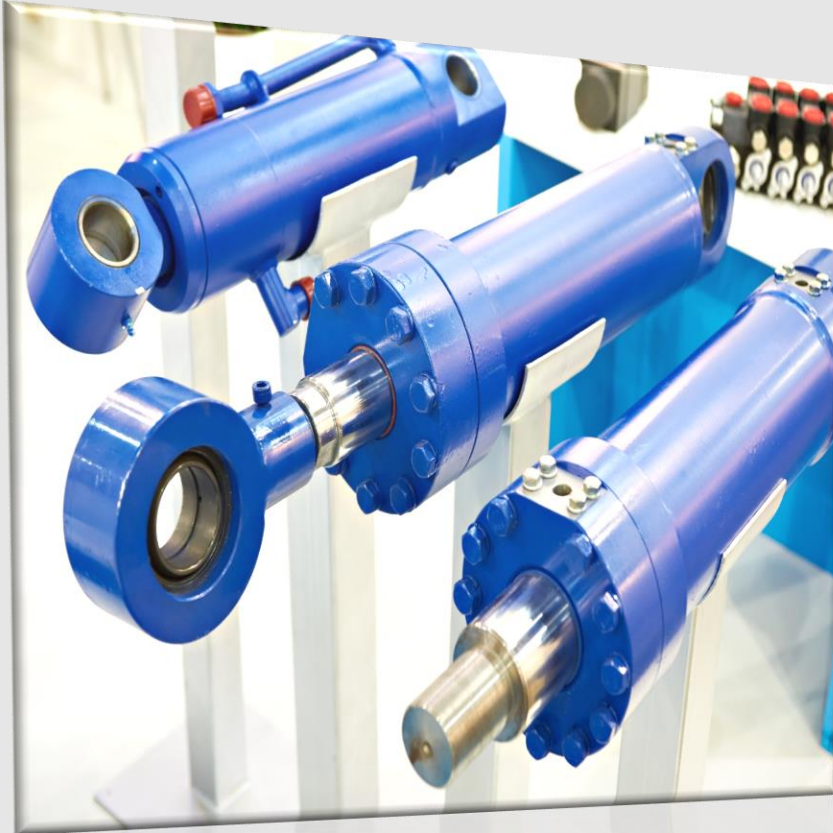


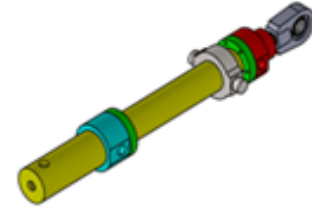
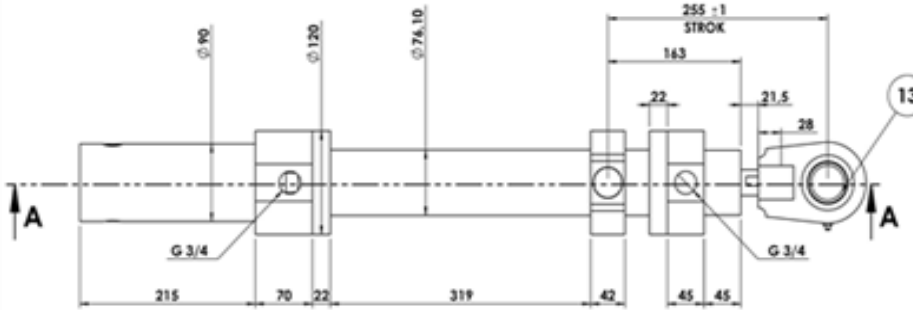




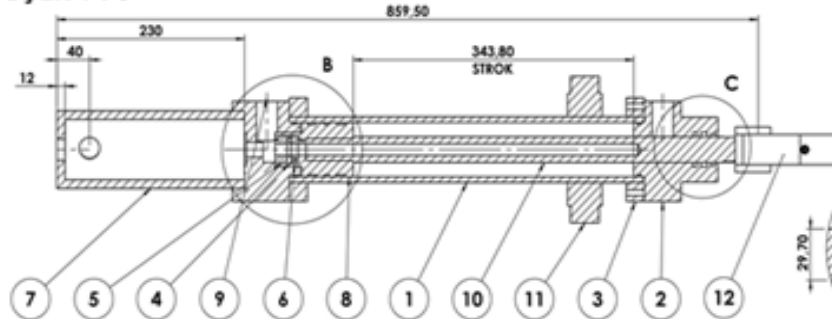


HYDRAULIC CYLINDERS

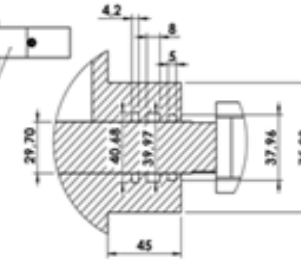




**KESİT A-A
ÖLÇEK 1 : 5**

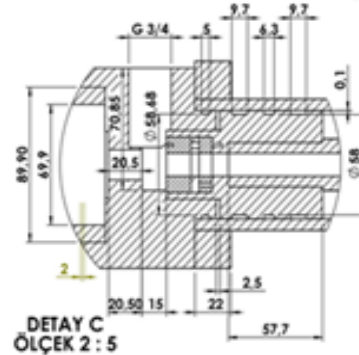


**DETAY B
ÖLÇEK 2 : 5**



ÖGE NO.	PARÇA NUMARASI	MİKT.
1	KOVAN	1
2	BOĞAZ KEÇE TAKOZU	1
3	Kovan Sabitleme	2
4	MANYETİK 1. PARÇA	1
5	MANYETİK 3. PARÇA	1
6	MANYETİK ESAS	1
7	Manyetik Koruma	1
8	MİL TAKOZU MANYETİKLİ	1
9	Piston Manyetik takozu	1
10	MİL	1
11	BAĞLANTI MAFSALI	1
12	cyen17094135_01	1
13	cyen17094135_02	1

S NO	EBATLARI	ÖZELLİĞİ	ADET	AÇIKLAMA
1	ØØØKØ3ØKØ18	KAZIYICI TOZ KEÇESİ	1	KASTAŞ K11-Ø30
2	ØØØKØ4ØKØ8	PİSTON-BOĞAZ NUTRİNGİ	1	KASTAŞ K21-Ø30/18 PU
3	ØØØKØ17_ØKØ2	KAPAK KEÇESİ	2	KASTAŞ KØ4-ØØ3
4	ØØØKØ47_ØKØ3	PİSTON KEÇESİ	1	KASTAŞ K17 ØØ3-Ø47,5 47X3,33 O-RİNGİ İLE
5	ØØØKØ4Ø_7XØ2	ÖN BASINÇ RİNGİ	1	KASTAŞ K2Ø-Ø30 PU
6	ØØØØØ3ØKØ3,7	POLYESTER RESİN BANT YATAKLAMA	1	KASTAŞ K73-Ø30
7	ØØØØØ3ØKØ3,7	POLYESTER RESİN BANT YATAKLAMA	2	KASTAŞ K73-Ø30
8	Ø1,5XØØ7,15	O-RİNG	1	KASTAŞ KØ-ØØ715ØØ



**DETAY C
ÖLÇEK 2 : 5**

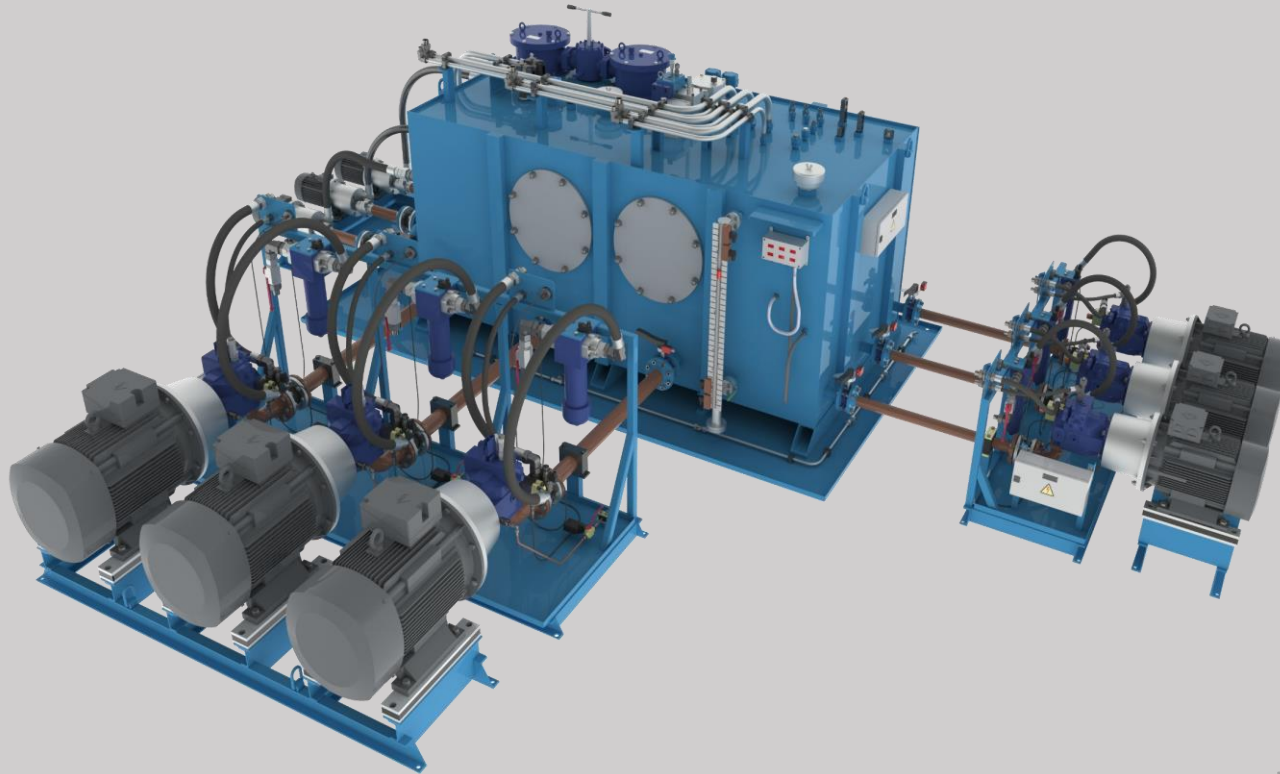
HAKAN HİDROLİK & PNÖMATİK			
PROJE	İSİM	İMZA	ÜNİTE
ÇİZEN	H.SENGÜL		
DENET.	A.ÖZGÜL		
DENET.	M.HAYEK		KONU
DENET.	M.TAŞ		682651 Piston tasarımı
ONAY.	H.ALI SERSALAN		
TARİH	16.03.2021		RESİM NO.
MALZEME			
AĞIRLIK	Kg	ÖLÇEK: 1:10	SAYFA 1 / 1





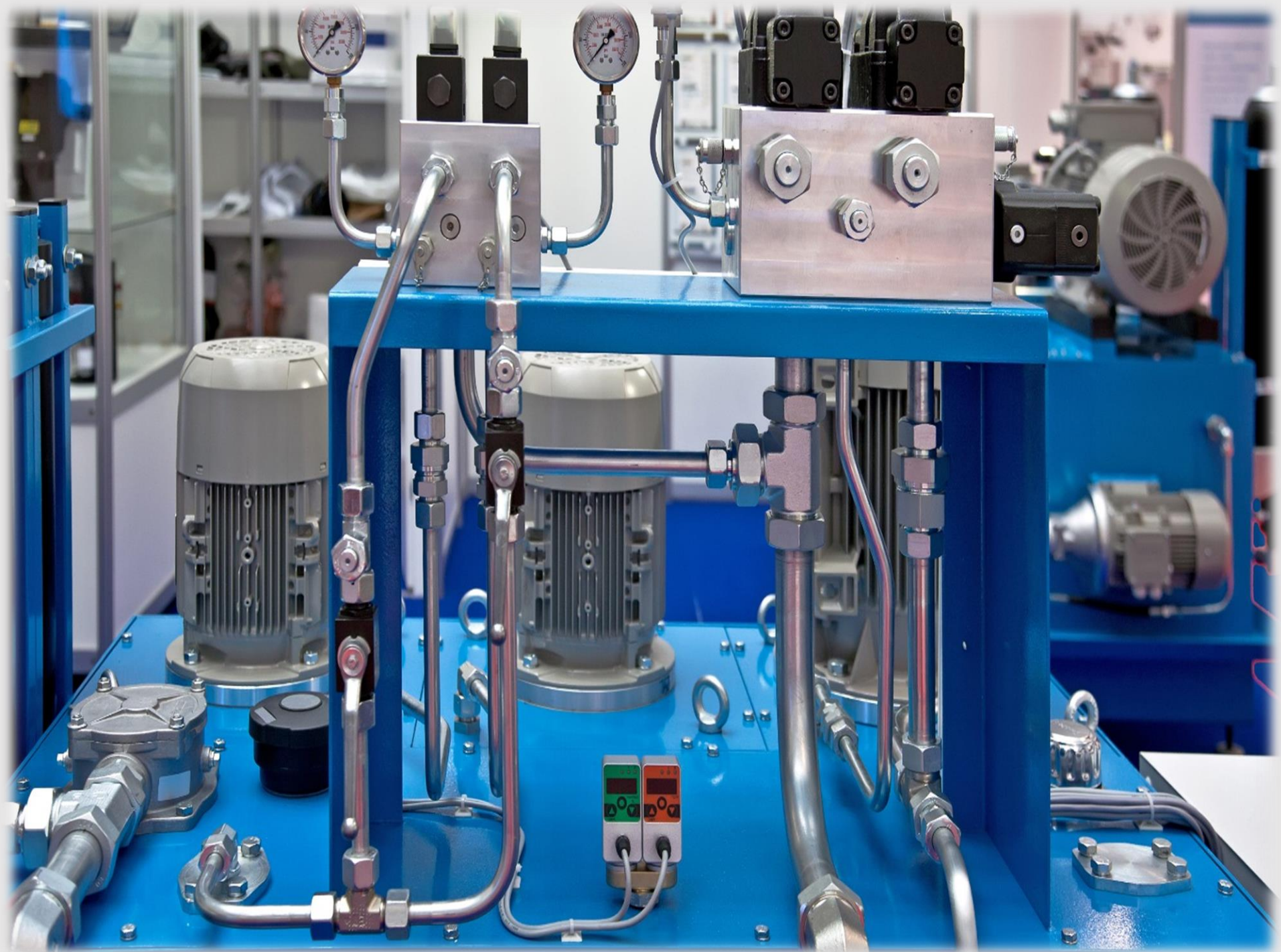






HYDRAULIC POWER UNITS









HYDRAULIC VALVE STAND





POLYP MANUFACTURING



